



Aboriginal Art Connections

Taking you to the soul of Aboriginal art

Thank you for joining us for this exciting journey across the Top End of the Northern Territory. We are looking forward to introducing you to this wonderful part of our country, some fascinating characters and fabulous art.

Much effort has been taken to ensure that the trip will run smoothly so you can relax and enjoy all of the special experiences along the way. We will be accompanying you so will be on hand to answer any questions or address any issues you may have at any time. Please feel free to contact either of us should you have anything to discuss at any time.

We trust you will enjoy this journey and that it provides you with memories that will last a lifetime.

Happy travels!

Vivien Anderson and Joy Eggenhuizen

On arrival at Darwin Airport you will be met by our representative who will transfer you to your accommodation. Please ensure you keep us updated with your flight details and any changes as they come to hand.

Day one Monday April 26, 2010 (Dinner)

Today is a day of leisure to enjoy the welcoming feel of tropical Darwin. Relax by the pool, or take some time to explore some of Darwin's local attractions. A visit to the **Museum and Art Gallery of the NT** is highly recommended. Those with more time and wanting to explore further may choose to travel out of town to enjoy some of the local scenic attractions.

Talk to us for more information on the many wonderful sight seeing opportunities available.

Meet in the foyer of the hotel at 4.30 pm for a transfer to Stokes Hill Wharf. Enjoy a private sunset cruise on Darwin Harbour on the sailing catamaran Daymirri 2. What a fabulous way to start our adventure and get together with your fellow travellers to get to know each other and plan for your exciting week ahead. After the cruise head to one of Darwin's city restaurants for dinner (own expense) or head back to your accommodation.



Tonight we stay at the 'Envy' group of properties in Gardiner Street in Darwin's CBD.

Enjoy the tropics in one of the most beautiful city apartments available. A brand new boutique complex of 12 luxury apartments by a well-known and award winning architect - just 2 minute walk from the city centre in a green and leafy street!

Envy is close to some of Darwin's best restaurants and shops but enjoys the tranquility of a quiet street.

Aboriginal Art Connections
Phone +61 8 89853266

GPO Box 4407, Darwin NT 0801
Email: artconnections.com.au

www.artconnections.com.au



Aboriginal Art Connections

Taking you to the soul of Aboriginal art

A huge amount of space, and decorated beautifully, the apartments have an Art Deco feel but with a trendy and modern interpretation. Access is via secure entry with a lift to all floors. The apartment is fully air-conditioned, has ceiling fans throughout if you prefer the dry season breezes and is very easy care with cool beautifully tiled floors in a delicate taupe and rugs.

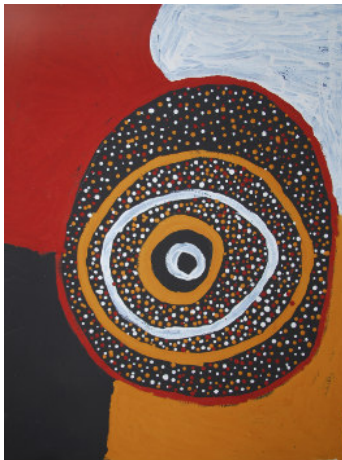
www.escapeforabreak.com

Day two Tuesday April 27, 2010 (Breakfast, lunch, dinner)

We'll be picked up from the hotel at 0800 for transfer to the general aviation section of Darwin airport for our 30 minute private charter flight to the **Tiwi Islands**. We'll be travelling in a Cessna 404 or similar with a professional and experienced pilot for the duration of our trip.

On the Tiwi Islands the art of body painting for ceremony has been practiced for thousands of years. The decorative patterning of the Tiwi was also used on Pukumani poles (mortuary poles) and tungas (bark baskets). The traditional form of mark making was derived from the creation story. The continuous patterning used is primarily decorative with the emphasis on strength of design rather than narrative. The artform is a living evolving expression of Tiwi culture. Within Tiwi art the placement of line and dot is distinctive.

www.tiwiart.com



Our first stop today is at Bathurst Island where we'll be met at the airstrip and transferred to the small art centre of Ngarawanajirri. Ngaruwanajirri Inc is located in Nguiu on Bathurst Island in a culturally important building called the Keeping House. The name, Ngaruwanajirri, in Tiwi means "helping one another". This is an artists' co operative workshop creating various types of art work including natural ochre paintings on canvas and Arches paper, ironwood carvings painted with natural ochres, batik on silk, block printing on cotton fabric and hand painted prints on good quality paper. The workshop was established in 1994. Many of the artists have been with the centre since its beginning and before then as part of the Adult Education program.

Next we visit the famous **Tiwi Design** art studio and gallery. Tiwi Design features a screen printing workshop, carving area, pottery shed and painting studio. There are often a number of artists working and meeting there, so there may be the opportunity to get to meet them or see them at work.

Tiwi Design started from a small room underneath the Catholic Presbytery in 1969. Two young men, Bede Tungatalum and Giovanni Tipungwuti worked with the art teacher from the school, Madeline Clear, to produce wood block prints. By late 1969 the artists started to transfer their designs onto silk screens. Printing textiles quickly became a major activity, and the fabrics remain popular today. Tiwi Design now produces a diversity of work that ranges from the tourist market to fine art sculptures and paintings. The ceramics studio produces sculptural pieces that combine traditional and contemporary elements that never fail to surprise.

Aboriginal Art Connections
Phone +61 8 89853266

GPO Box 4407, Darwin NT 0801
Email: artconnections.com.au

www.artconnections.com.au



Aboriginal Art Connections

Taking you to the soul of Aboriginal art

In the late morning we will board our aircraft again for the short flight to neighboring Snake Bay (Milikapiti) Melville Island.

We'll be met on arrival and transferred to **Jilamara Arts**. We'll stop for a relaxed picnic lunch together before spending some time at the art centre.

Jilamara Arts and Craft Association opened in the mid 1980's with a small group of artists using traditional Tiwi and contemporary media to produce paintings, etchings, screen-prints and lithographs. Artists use solely natural ochres in traditional colours in their paintings, many of which are highly collectable. Jilamara continues to produce innovative and contemporary body painting designs. Large carvings, including Pukumani Poles are a feature of Jilamara artists' work.



We will also be privileged to be taken out to the significant site of **Karlsruhe** to see some wonderful old Pukumani Poles and hear more about this fascinating culture.

www.jilamara.com

Return to Darwin and our accommodation at Envy with dinner close by at Spellman's Tramontina.

Day three Wednesday April 28 (Breakfast, lunch, dinner)

We'll have an early start today with a transfer to the Darwin Airport at 0700 to join our chartered flight to Gove in eastern Arnhem Land. This flight will take approximately 2.5 hours, so settle in and enjoy your bird's eye view over Kakadu and Arnhem Land.

On arrival in Gove we'll pick up a rental car and take the 15 minute drive to Yirrkala to visit **Buku Larrnggay Mulka** arts centre.

This part of Australia is very special. The coastline and hinterland are largely unspoilt and still managed by the traditional owners, the Yolngu (Aboriginal people of the region between Numbulwar and Maningrida).

Buku-Larrnggay means the feeling on your face as it is struck by the first rays of the sun - indicating that you are in the most easterly place in the Top End of Australia - Miwatj or the Sunrise country. Mulka is a sacred but public ceremony. It also means to hold or protect. Thus we are the Northeast Arnhem Land cultural centre and keeping place. The artists of the Buku-Larrnggay Mulka Art Centre have established a worldwide reputation for excellence, having won many of Australia's major Indigenous art prizes.





Aboriginal Art Connections

Taking you to the soul of Aboriginal art

The Yolngu people are all capable of expressing their sacred identity through art and the artists who work through the Centre are men and women of all ages. The art and craft of Buku-Larrnggay Mulka is drawn from Yirrkala and the approximately 25 homeland centres within a radius of 250km - the geographical area is known as the Miwatj region.

Buku-Larrnggay Mulka Art centre is the hub for renowned artists of this region and may provide the opportunity to meet important artists in addition to the extraordinary exhibition of beautiful memorial poles, small carvings, weavings, jewellery and bark paintings. The Centre is also a premier source of authentic yidaki (didgeridus).

www.yirrkala.com

This afternoon head to the township of Nhulunbuy where will overnight in the local "Walkabout Hotel".

Day four Thursday April 29 (Breakfast, lunch, dinner)

After breakfast we'll head to the airport to meet our private charter plane for the next leg of the journey.

This morning we board our private aircraft and take a short flight to the community at Elcho Island, Galiwin'ku. Prior to visiting **Elcho Island Arts** we have been invited to participate in a cultural tour of the island, this will give us better understanding of the art on exhibition at the art centre. We will also have the opportunity to meet Gali Yalkarriwuy Gurruwiwi, internationally celebrated performer and custodian of the Banumbirr (Morning Star Ceremony). Gali and his wife Jane are keen for the group to be welcomed to their country. Gali won the 2007 Kate Challis RAKA Award and was one of 15 finalists in the 2009 Western Australian Indigenous Art Award. Gali was also invited as indigenous ambassador to the Monash University inaugural Indigenous Elders' Day this year.

The Art Centre at Elcho Island is located on a cliff top south east of the Galiwin'ku town centre and enjoys spectacular views looking over Mission Beach, Abbott Island and the surrounding sea. The artists from Elcho Island specialise in producing both traditional Yolngu style works and more contemporary designs utilising natural ochres on bark and paper. They also produce stunning Morning Star Poles, Yidaki, carvings, jewellery, and woven baskets made from raw materials collected from the surrounding bushland and beaches.

www.elchoarts.com

In the early afternoon we'll head to Ramingining to visit **Bula'bula Arts**. Bula'bula Arts is renowned for paintings on bark and on canvas, hollow logs and fibre art such as baskets, mats and dilly-bags and limited edition prints on paper. In 2007, Bula'bula Arts revamped its screen-printing activities, producing lengths of screen-printed fabric.

Ramingining is situated about 30 kms from the coast and the region is home to more than sixteen clans speaking fourteen different languages. Ramingining is the town centre for a series of small outstations dominated by great painters, such as Dorothy Djukulul and Djardie Ashley, Pussycat Guthay Guthay and Namiyal Bopori. www.bulabula-arts.com

Aboriginal Art Connections
Phone +61 8 89853266

GPO Box 4407, Darwin NT 0801
Email: artconnections.com.au

www.artconnections.com.au



Aboriginal Art Connections

Taking you to the soul of Aboriginal art



Late this afternoon we'll fly to the Arnhem Land community of **Maningrida** for our overnight accommodation.

Our accommodation is located at **Djinkarr**, a remote outstation about 15 minutes drive from Maningrida community. Built with locally produced mud bricks and decorated with Maningrida art, the lodge is set up in the bush, in a quiet and pristine environment. Overlooking the

floodplains, the lodge has three rooms, large dining room and verandah to relax.

Meals are served in the central dining area and are freshly prepared by our team of local hosts. 3 spacious rooms sleep up to 2 people each. Bathroom facilities are located within the Lodge, and are available on a **shared basis**.

Overnight Djinkarr, Maningrida
www.maningrida.com/tourism

Day five Friday April 30 (Breakfast, lunch, dinner)

We'll spend today at Maningrida, experiencing a taste of local culture and art. Visit the art centre of **Maningrida Arts and Culture** which features diverse art styles symptomatic of the many different language groups of central Arnhem Land. Leading artists managed by Maningrida Arts and Culture include John Mawundjul, James Iyuna, Marina Murdinga and Anniebelle Marrngamarrnga. You will see an extensive range of bark paintings, wood carvings, woven sculpture, beautifully painted hollow logs and intricate weavings.

You will also enjoy a guided tour of the Djomi Museum showcasing the art and culture of the local people and a visit by troopie out to an artist's outstation.

www.maningrida.com

This afternoon we will take an eco cruise on the Liverpool River in the company of local guides.

Dinner tonight will be at Arnhem Land Barramundi Nature Lodge which is situated close to our accommodation.

<http://www.barralodge.com.au/content/show/Dining.html>

Return to Djinkarr for our overnight accommodation



Aboriginal Art Connections
Phone +61 8 89853266

GPO Box 4407, Darwin NT 0801
Email: artconnections.com.au

www.artconnections.com.au



Aboriginal Art Connections

Taking you to the soul of Aboriginal art

Day six Saturday May 1 (Breakfast, lunch, dinner)

This morning we'll depart Maningrida and fly west to the community of Oenpelli.

On arrival at Oenpelli we'll be met at the airstrip and transferred to **Injalak Arts and Crafts**.

The Injalak Art Centre is situated in the most beautiful of sites. The escarpment rises to the east. Gunbalanya billabong at its rear is surrounded by open flood plains and overshadowed by Injalak Hill - a site extensively rich in rock art paintings and the source of much inspiration for the artists. It is a stunning, beautiful place.



Join experienced Indigenous guides for an exclusive tour of **Injalak Hill**. Discover a natural marvel on this tour in this place of black soil plains and tranquil wetlands. Extending from the base of a vast escarpment, you can see a wide variety of birds, wallabies, goannas and other wildlife. Beautiful sandstone caves, where you will find the ancient remnants of Aboriginal dwellings and rock paintings, are also explored on this memorable tour. The tour is led by an indigenous guide, providing a unique perspective. Tours generally go for two to three hours and a reasonable level of fitness is required.

After the tour be met by Anthony Murphy of **Injalak Arts and Crafts** and explore some of the treasures tucked away here.

Injalak produces art on bark and paper in the style synonymous with Western Arnhem Land; a large range of weavings; didgeridoos, artefacts and carvings, and screen printed products such as t-shirts and fabrics.

Later this afternoon we'll fly to Darwin for our final evening together.

Day seven Sunday May 2 (Breakfast)

Breakfast at the hotel is included today. It may be the last chance for the group to get together and relive the adventure of the last week before heading off back into the 'real world'.

End of touring

Price is inclusive of all accommodation, travel and meals and beverages (not Alcoholic beverages) ex Darwin

7 Day Experience

Single: Aus\$9850 (please note, accommodation at Maningrida is on a twin share basis only)

Twin: Aus\$9000 per person twin share

Aboriginal Art Connections
Phone +61 8 89853266

GPO Box 4407, Darwin NT 0801
Email: artconnections.com.au

www.artconnections.com.au



Aboriginal Art Connections

Taking you to the soul of Aboriginal art

Things to remember:

Luggage

Please limit your luggage to one small, soft bag to a maximum of 14kgs per person, plus one item of carry on baggage.

Clothing

We recommend cool, comfortable, casual clothing throughout the journey. The days will be hot, humid and sunny and the nights warm. Hotels and restaurants in Darwin and Arnhem Land do not have strict dress requirements, neat casual clothing is the norm.

Please bring comfortable walking shoes and a light long sleeved shirt for day time walks.

Be sun smart

Make sure to wear a hat and sunglasses and sunscreen when we're outdoors and don't forget to drink lots of water at all times.

Travel insurance

Whilst all care is taken to provide the itinerary as stated, there may be some issues that are beyond our control. We recommend that all travelers have adequate travel insurance to cover delays, loss or theft of personal belongings, cancellations or illness. **We can assist you with a policy if required.**

Don't forget

Your cameras and all necessary chargers and batteries. We may often be a long way from a store or supermarket and choices may be limited. Be sure to carry spare batteries and memory cards as there will be many photo opportunities along the way. All accommodation houses will have access to standard power points in the rooms, with some (but not all) providing internet access or dial up facilities. We will often be out of mobile telephone range. Also bring your note books, you're bound to want to write things down, bring a hardy one, size to suit yourself.

Shopping

Most hotels and art centres will accept Visa card and Mastercard with the options for Diners and Amex being more limited. Art centres will also arrange careful packaging and shipment of any purchases you may make along the way as it will not be possible for you to carry art works with you.

Meals

Meals are included where stated on the itinerary. This will be a standard cooked breakfast, light lunch or two course dinner. **No beverages are included** but may be purchased easily at most locations. As alcohol is not permitted in Arnhem Land, there will no alcohol during our stay at Djinkarr. Please let us know in advance if you have **any special dietary needs** or medical conditions we should be aware of.

Cancellations

Cancellations within 60 – 31 days prior to departure will attract a cancellation fee of 10% of the full price of the tour. Cancellations within 30 – 15 days prior to departure attract a cancellation fee of 60% of the full price of the tour and cancellations within 14 days of departure date will attract a 100% cancellation fee.